

Sauna series

COB | 10mm (0.39in)

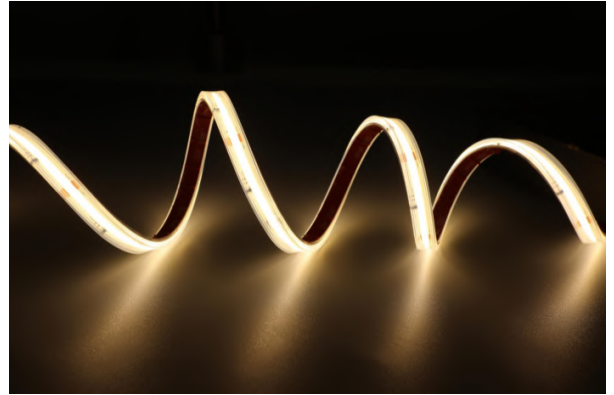
COB

p/n: VFL-SNCOB-940K-480-10-WP67-24V08



Features

- 480x SMD LED per meter (146xSMD LEDs per foot)
- Max.operating temperature up to 125°C (257 °F)
- Up to 760Lm/m (231Lm/ft)
- High efficacy of 95Lm/W
- Ideal for sauna room, hot spring and etc applications
- Durable, flexible and low profile
- Double sided 3M tape mounting



Electrical Data

Voltage	24V DC
Wattage per meter	8W (2.43W/ft)
Current per meter	0.33A (0.1A/ft)/24V

LED Data

LED type	COB
Manufacturer	SAN'AN
Chips per meter	480 (146 Led/ft)

Photometric Data

Color temperature	2700K / 3000K 4000K / 6500K
Color rendering index Ra	>90
Luminous flux per meter	760Lm/m (231 Lm/ft) @ 4000K 722Lm/m (220 Lm/ft) @ 3000K
Luminous efficacy	95Lm/W @ 4000K
Beam angle	135°
Dimmable	0~100%

Construction / Protection

Substrate	Double layer FPCB
Thickness of FPCB	2 oz
Mounting	Double sided tape 3M
IP rating	See figure 3.
Operating temperature	-25 ~ +125 °C (-13 ~ 257 °F)
Storage temperature	-20 ~ +60 °C (-4 ~ 140 °F)

Dimensions

Cutting increments	50 mm (1.97 in) See figure 1.
Length	5 m (16.4 ft)
Width	12 mm (0.47 in)
Height	5.5 mm (0.22 in)

Lifetime

Lifespan (L70)	>54,000 hours
----------------	---------------

Testing environment temperature = 25 °C



Figure 1.

Dimensions & Cutting increments

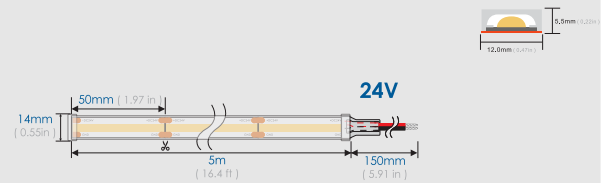


Figure 2.

Suitable Accessories

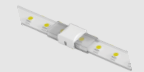
Connector



Code: HM-FC-2P-10
Feeding connector with
2-wire cable 150mm (5.91in)



Code: HM-JC-2P-10
Joint connector with
2-wire cable 150mm (5.91in)



Code: HM-MC-2P-10
Middle connector

Profile



Surface-Mount
Code: VL-SF1709



Recessed-Mount
Code: VL-RC2309



Corner-Mount
Code: VL-TR2020

Figure 3.

IP Protection Ratings



- LED
- FPCB
- Silicone Gel
- Double-sided tape 3M 300LSE (indoor)
- Double-sided tape 3M VHB (outdoor)